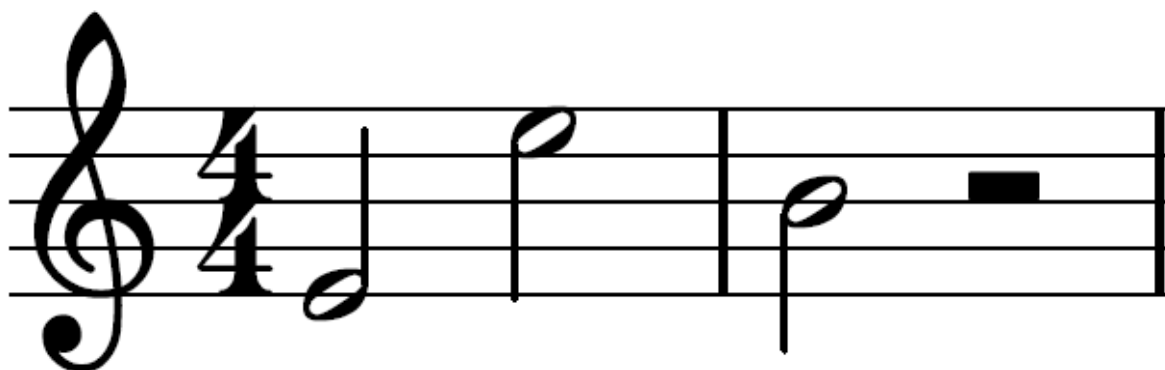




Leathlán = 4 bhuille

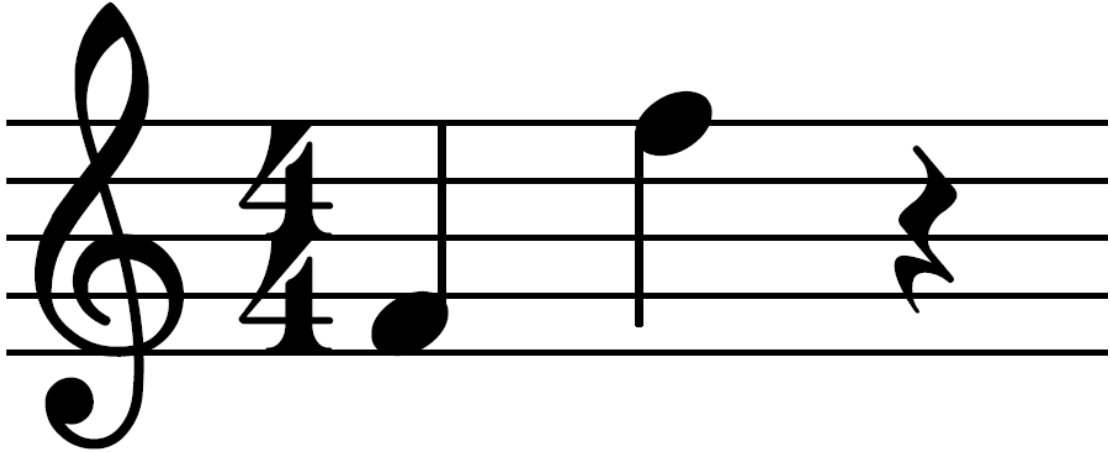
Crochtar an sos leathlán ón 4ú líne.



Minim = 2 bhuille

Suíonn an sos minim ar an 3ú líne.

Téann an cos suas ar dheis nó síos ar chlé.

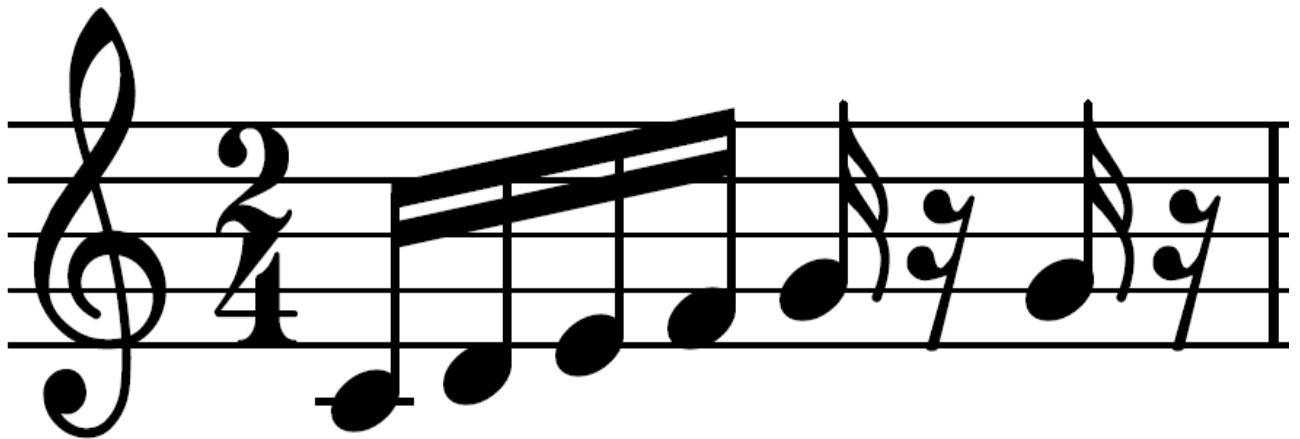


Croisín = 1 bhuille amháin

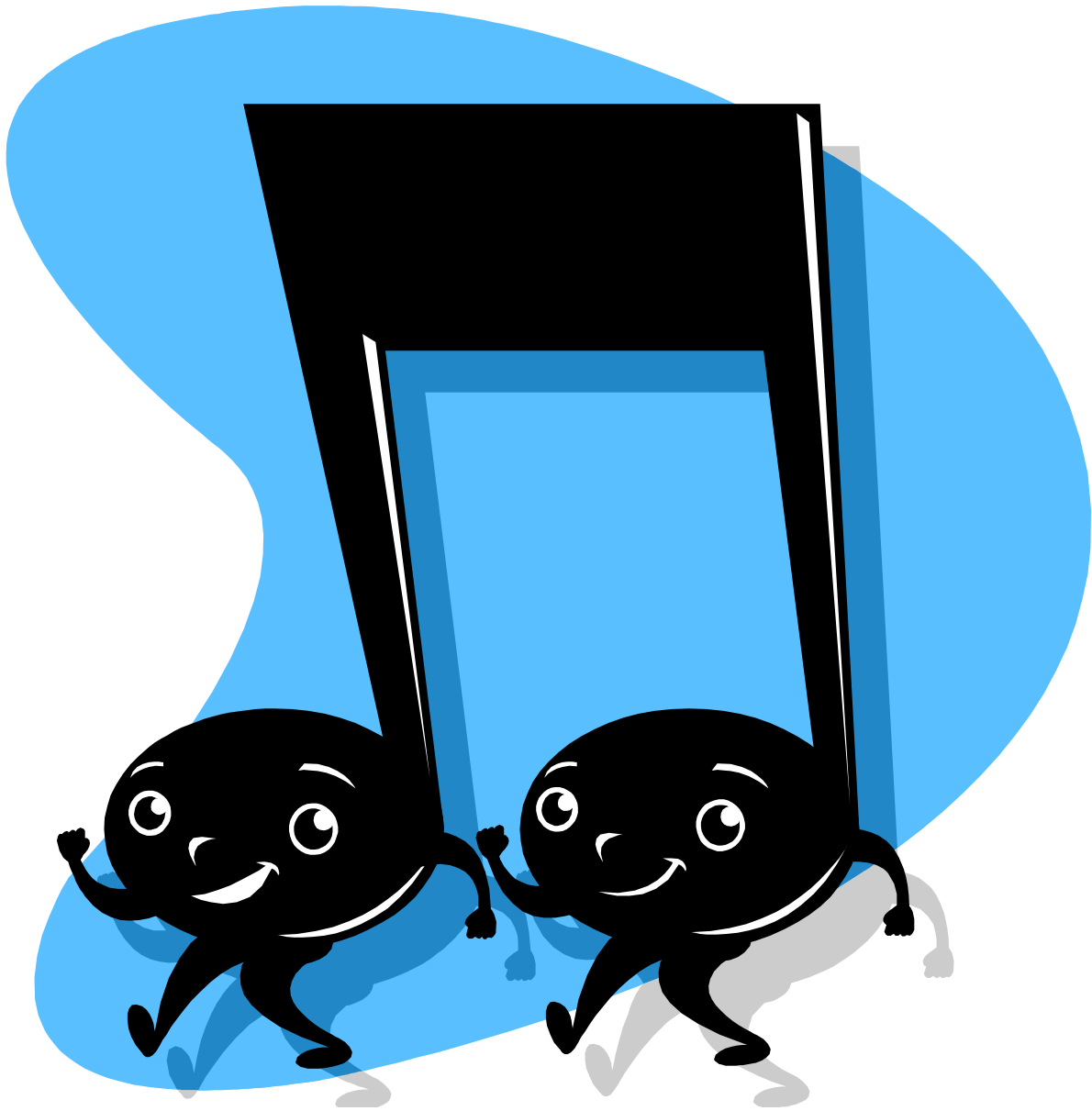
Téann an chos suas ar dheis, nó síos ar chlé.



Camán = ½ bhuille



Leathcamán = ¼ bhuille



Dhá chamán le chéile

Dhá ½ buille = buille amháin



Dhá leathchamán

Dhá nóta $\frac{1}{4}$ bhuille = $\frac{1}{2}$ bhuille